



NATIONAL  
CONCRETE MASONRY  
ASSOCIATION

**NEW from  
BIA, ICC, NCMA,  
& WSCPA**

# Structural Masonry Design System Version 4.1

**\$259 Discounted Price for Design Professionals**

**A Design Program**

**Formerly  
NCMA Masonry  
Design Software**

## Structural Masonry Design System

The National Concrete Masonry Association  
Western States Clay Products Association  
The Brick Industry Association  
International Codes Council  
With Support from the NCMA Foundation



**Masonry 4.1**

Copyright (c) 2007 NCMA

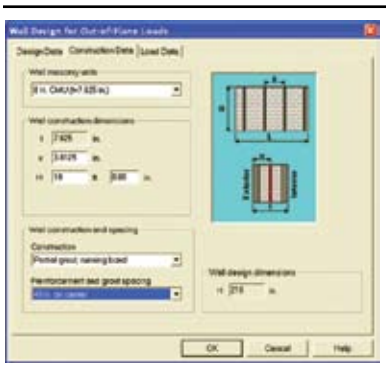
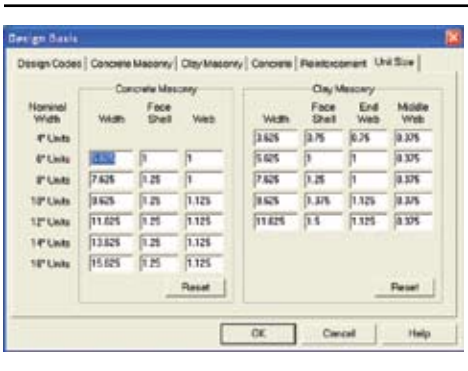
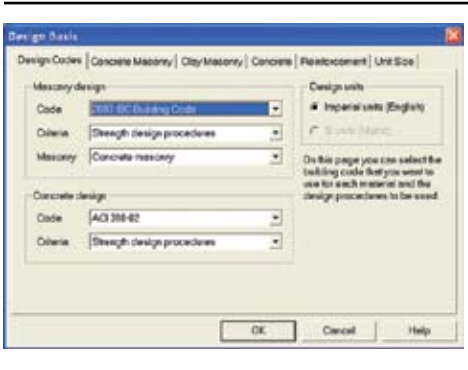
This program is protected by U.S. and international copyright laws as described in the About Box.

**Do All Your Concrete Masonry Resource Shopping Online**

**[www.ncma.org](http://www.ncma.org)**

**Now with Software Download Capability!**

# Look What You Get!

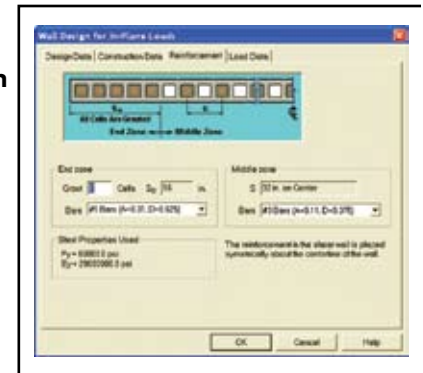
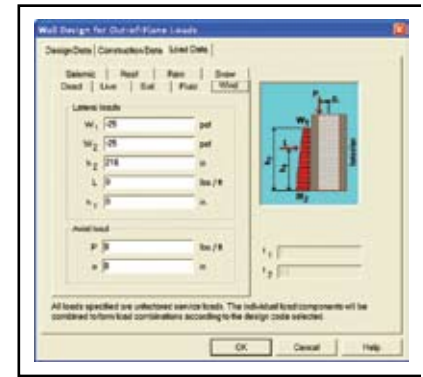


## Added Features for Version 4:

- 2006 IBC (4.1)
- IBC alternate load combinations for ASD (2006) (4.1)
- Clay Masonry Design Added
- Added 2005 MSJC and 2003 IBC
- Column Design
- Lintel Stirrups and Deflections
- Specify Lintel Cover over Reinforcement
- 14 and 16 in. Concrete Masonry
- Customize Face Shell and Web Thicknesses
- More Bar Size Selections for Lintels
- Bar Development and Splice Lengths
- Out-of-Plane Deflection Under Service Loads

## Retained Features from Previous Version

- Allowable Stress & Strength Design
- MSJC '95, '99, '02 and IBC '00 Design
- Input Design Forces or Calculate from Input Loads, Spans, and Boundary Conditions
- Combined Axial and Lateral Loading Analysis
- Shear Wall Design
- Reinforced or Unreinforced Designs
- Fully or Partially Grouted
- Graphical Interface (Interaction Diagrams)
- Printout of Calculation Pages
- Lintel Design – Masonry or Precast

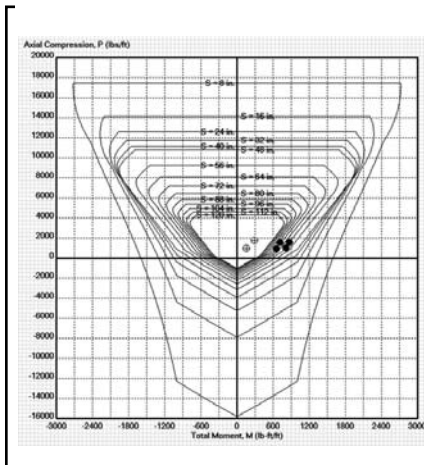


To order, use the convenient order form below, order on-line or download from the ncma e-store

[www.ncma.org](http://www.ncma.org)

or contact NCMA's publication department at 703.713.1900.

*Order Yours Today!*



Make short work of your concrete masonry design. Design from input applied axial and lateral loads or input axial loads, moments, and shear values. Quickly optimize design among the different design options with the mere click of the mouse

## Product

Software Only  
CMS 10 Upgrade from Ver. 3.0+  
CMS10 Upgrade from Version 4.0  
Software & Design Tables

## Order number

CMS10  
CMS10V3  
CMS10V4  
CMS10 + TR121 (2000 ed.)

## Price

Professional \$259 • Retail \$370  
Professional \$129.50 • Retail \$185  
Professional \$35 • Retail \$50  
Professional \$318 • Retail \$461

All prices plus shipping and handling • \*Current registration number must be provided for upgrade price.  
Mail or FAX order form to NCMA • 13750 Sunrise Valley Drive, Herndon Virginia 20171 • Fax 703.713.1910  
e-mail: [publications@ncma.org](mailto:publications@ncma.org) or order on-line at [www.ncma.org](http://www.ncma.org) (downloadable)

## Existing CMS-10 Prev. Ver. ID # for upgrade price:

Name: \_\_\_\_\_  
Company: \_\_\_\_\_  
Street Address: \_\_\_\_\_  
City/State/Zip: \_\_\_\_\_  
Phone: \_\_\_\_\_

Total Order	Domestic Shipping*
\$0.00 - \$100.00	\$9.50
\$100.01 - \$150.00	\$11.00
\$150.01 - \$260.00	\$13.00
\$260.01 and up	5%

\* Mainland 48 States Only

(Please circle option being ordered at top of order form)

Quantity \_\_\_\_\_ x \$ \_\_\_\_\_ ea. = \$ \_\_\_\_\_

Subtotal = \$ \_\_\_\_\_

Add 4.5% Sales Tax (VA residents only) = \$ \_\_\_\_\_

Add Shipping (see chart) = \$ \_\_\_\_\_

**TOTAL = \$ \_\_\_\_\_**

Credit Card (select one)  VISA  MASTERCARD  AMERICAN EXPRESS

Card No.: \_\_\_\_\_ Exp: \_\_\_\_\_

Name on Card: \_\_\_\_\_

Signature: \_\_\_\_\_

**Prepayment required on all nonmember orders.**

Payable to: National Concrete Masonry Association